

~DREAM~

~DESIGN~

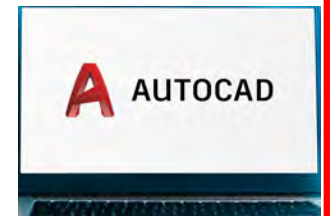
LET'S BUILD YOUR ISLAND DREAMS!

~BUILD~



CadWorks Hawaii.com

cadworkshawaii@gmail.com



CadWorks Hawaii.com

ARCHITECTURAL DRAFTING SERVICES

WHO WE ARE

Cadworks Hawai'i is a residential architectural design-drafting firm experienced in all phases of CAD (computer-aided design), drafting, and BIM (building image modeling) services. Our clients have included major builders, such as Lennar Homes and Pulte Homes, two of the top five home builders in the US, as well as many custom high-end homes for individuals in Hawai'i, on the islands of O'ahu, and Kaua'i, and on the Space Coast of Florida. We have also contributed to many commercial projects in Florida, Hawai'i, and California.



WHAT WE DO

We specialize in residential home designs, additions, and remodels, and also produce as-built construction drawings when required. At your initial appointment, we will carefully listen to your ideas, review your sketches, pictures/photographs, and other material you may have for reference. This will enable us to determine the best approach in starting your project.

OUR TEAM

Our multi-skilled design-drafting team has over 30 years of architectural design experience. We use AutoDesk Revit software to produce clear, detailed drawings of your project. We design and draft plans using BIM, which means we create 3D renderings of various views to enable you to visualize what your home will look like, and to assist your builder during construction.

THE DESIGN PROCESS

The design-build process begins with a layout of what *you* want in your home. ***First***, we need to know the anticipated square footage of your project, time frame, home-style you are interested in, and your building budget. We will incorporate your wishes and ideas into a preliminary **Floor Plan** for each level of your home. The plans will show 2D room layouts with fixtures, such as stove, sink, refrigerator, etc., and locations of doors, windows, closets, etc. ***Second***, preliminary **Exterior Elevations** (floor-to-roof views) are created to show the standard four views of the outside of the home. ***Third***, the basic layout drawings will be sent to you for verification and approval before we complete your drawing package. ***Note***: *These phases will be explained in greater detail on the following pages.*



Throughout each phase of the design process, we will provide you with a PDF (portable document file) for ease of viewing and printing. We will provide highly detailed and clear construction documents and will assist you in filling out the required State of Hawai'i and County construction permit forms. Your home will be designed per specifications of Hawai'i Building Codes and Community Requirements. One of our associate architects/engineers will have continuous design oversight of your project throughout its entirety.

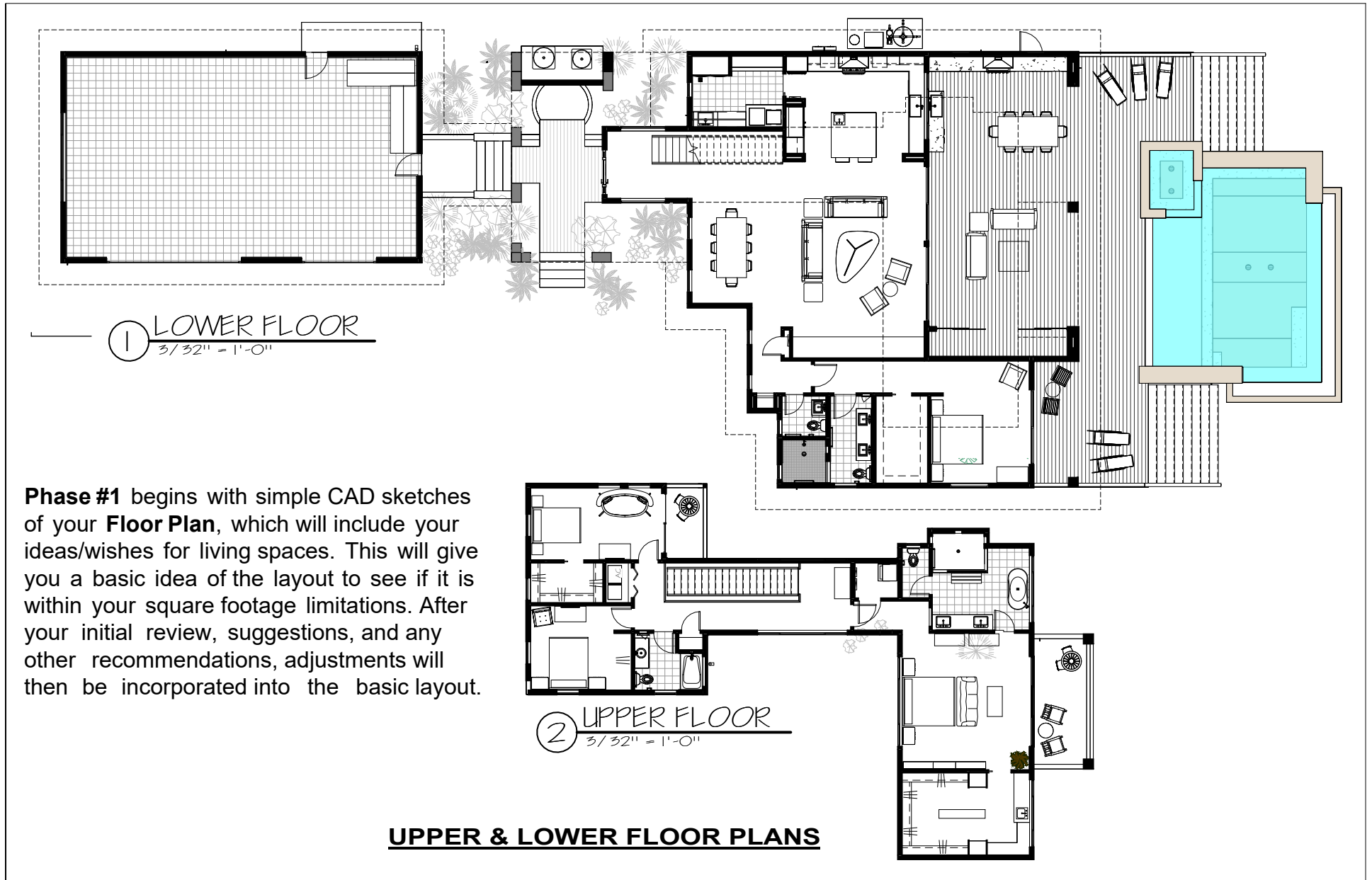


BACK ELEVATION WITH POOL



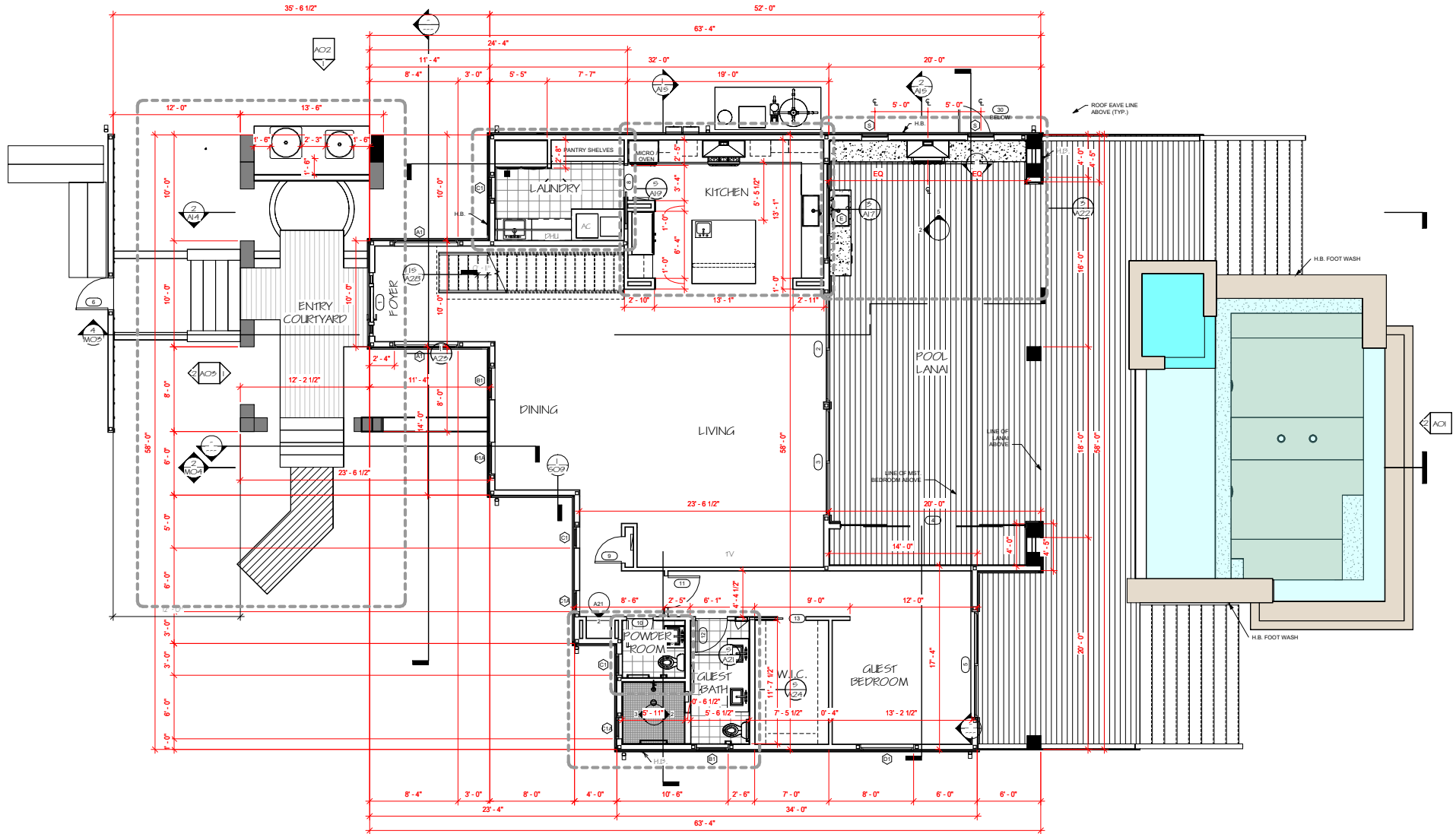
BACK / RIGHT ELEVATION WITH POOL

PHASE #1: CONCEPTUAL DRAWINGS



PHASE #2: PRELIMINARY DRAWINGS

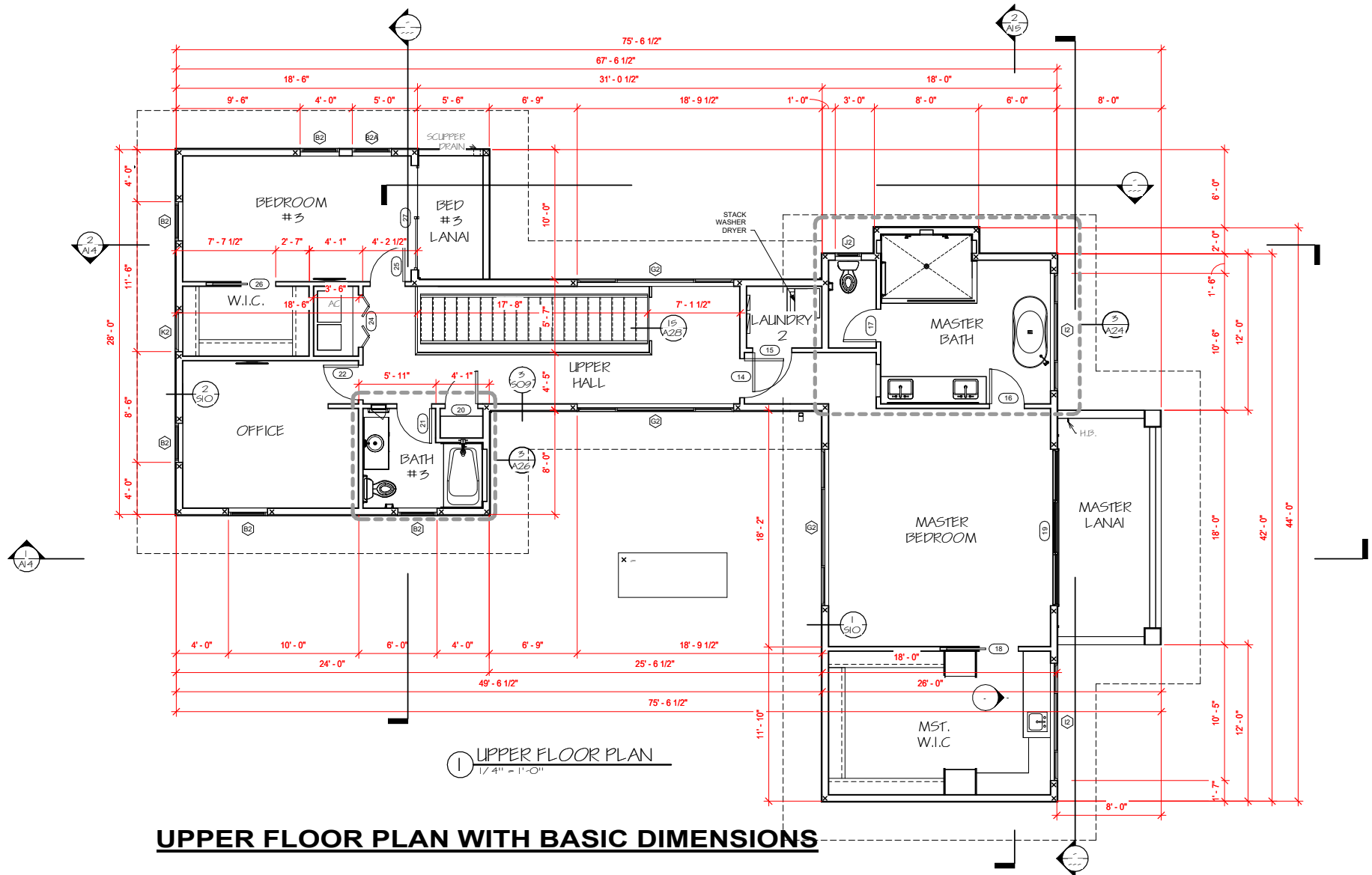
Once the basic layout is accepted, we will proceed with creating a more detailed **Floor Plan** showing kitchen cabinets, appliances, windows, doors, bathroom fixtures, etc. Also included will be **Exterior Elevations**, **Roof Plan**, and basic dimensioning.



1 LOWER FLOOR PLAN
1/4" = 1'-0"

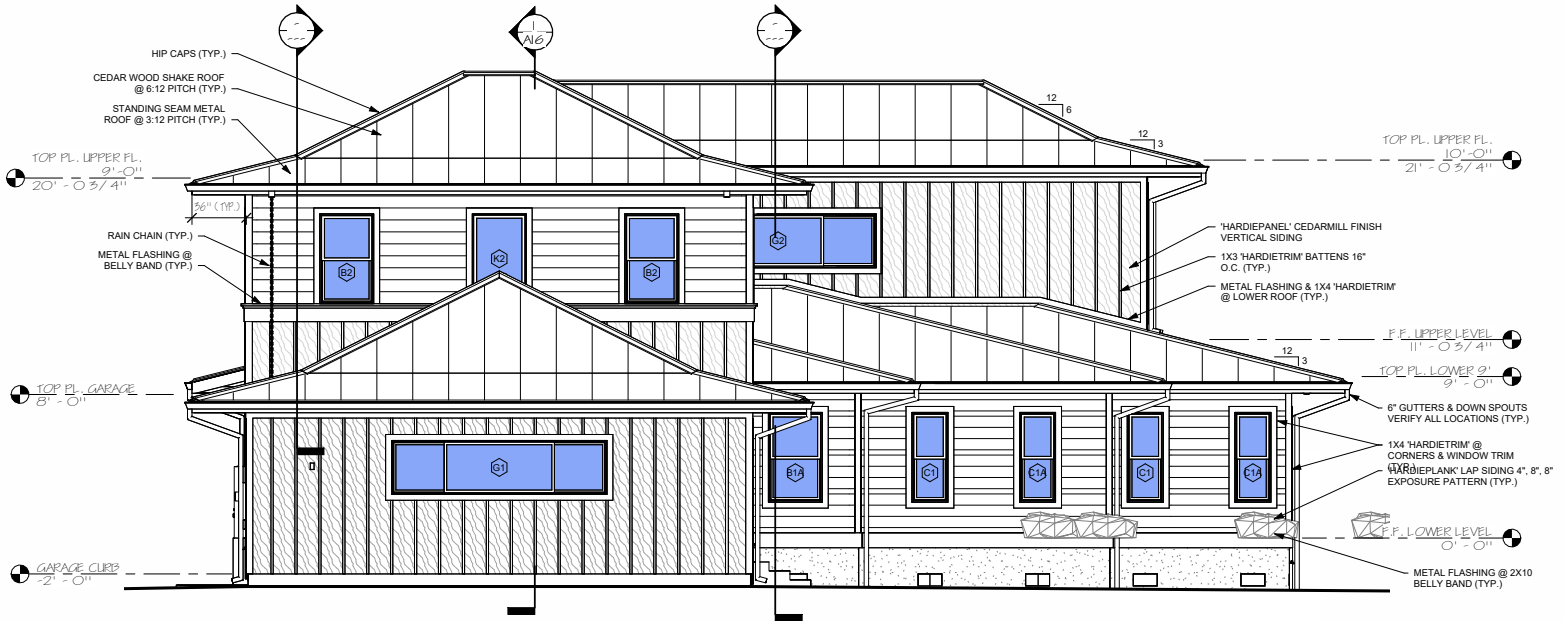
LOWER FLOOR PLAN WITH BASIC DIMENSIONS

PHASE #3: FIRST FULL SET OF DETAILED DRAWINGS

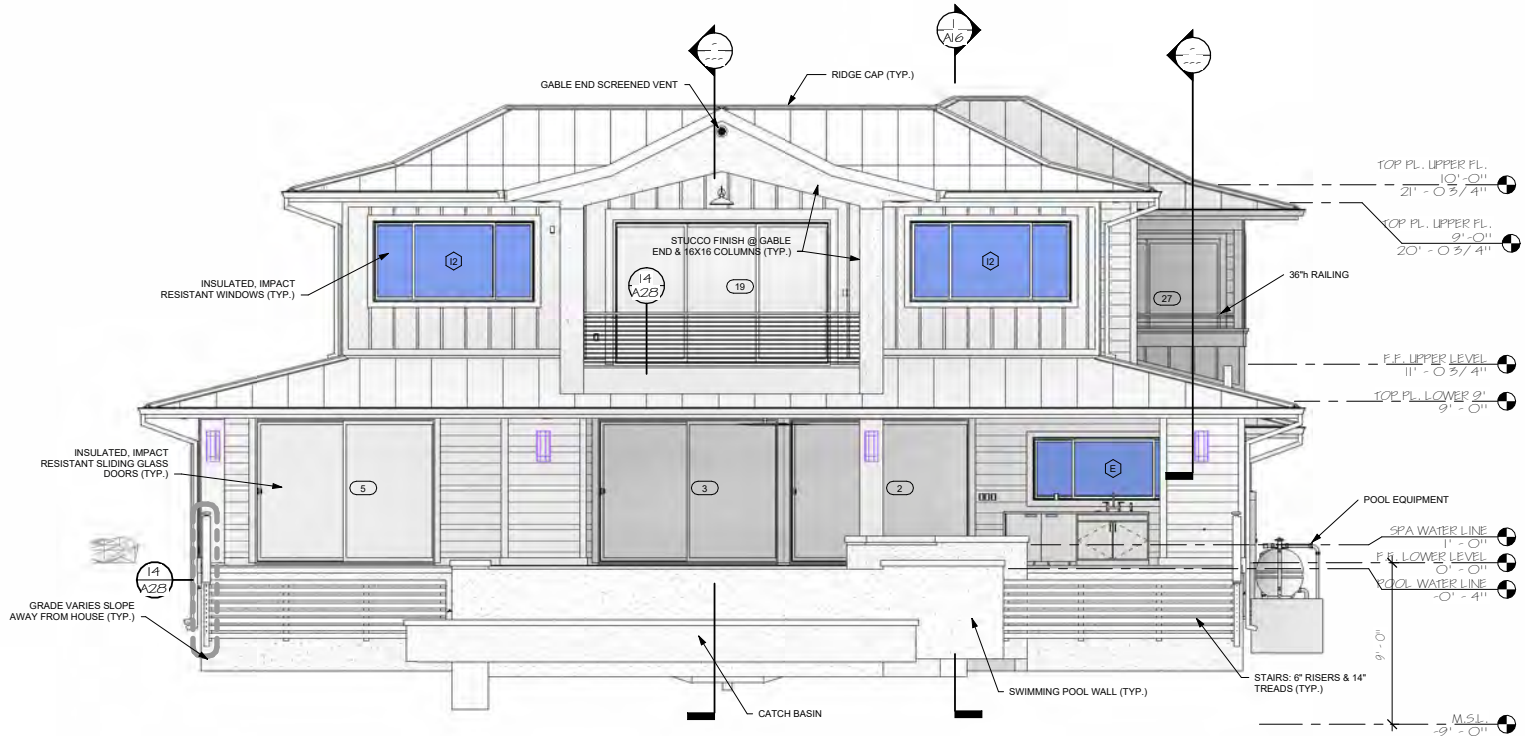


UPPER FLOOR PLAN WITH BASIC DIMENSIONS

After your approval and any further suggestions/revisions you, or we, may have are incorporated, the **Interior Elevations**, required **Building Sections**, **Architectural Details**, **3D Interior Views**, and **3D Exterior Views** will be created.

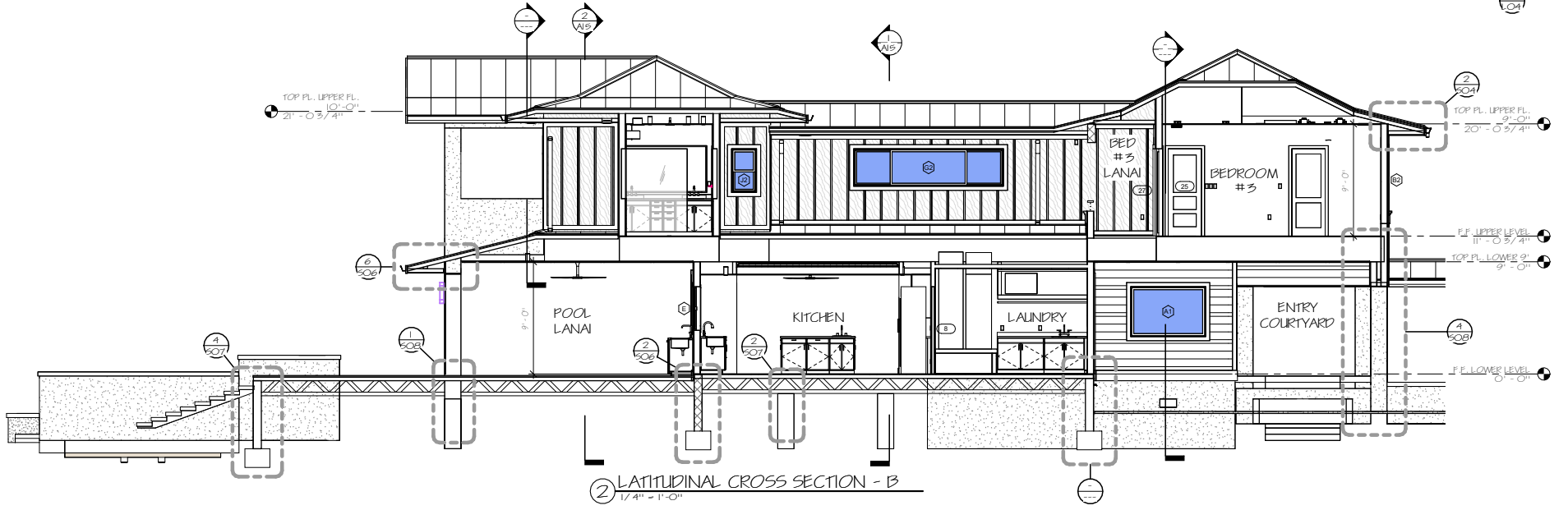
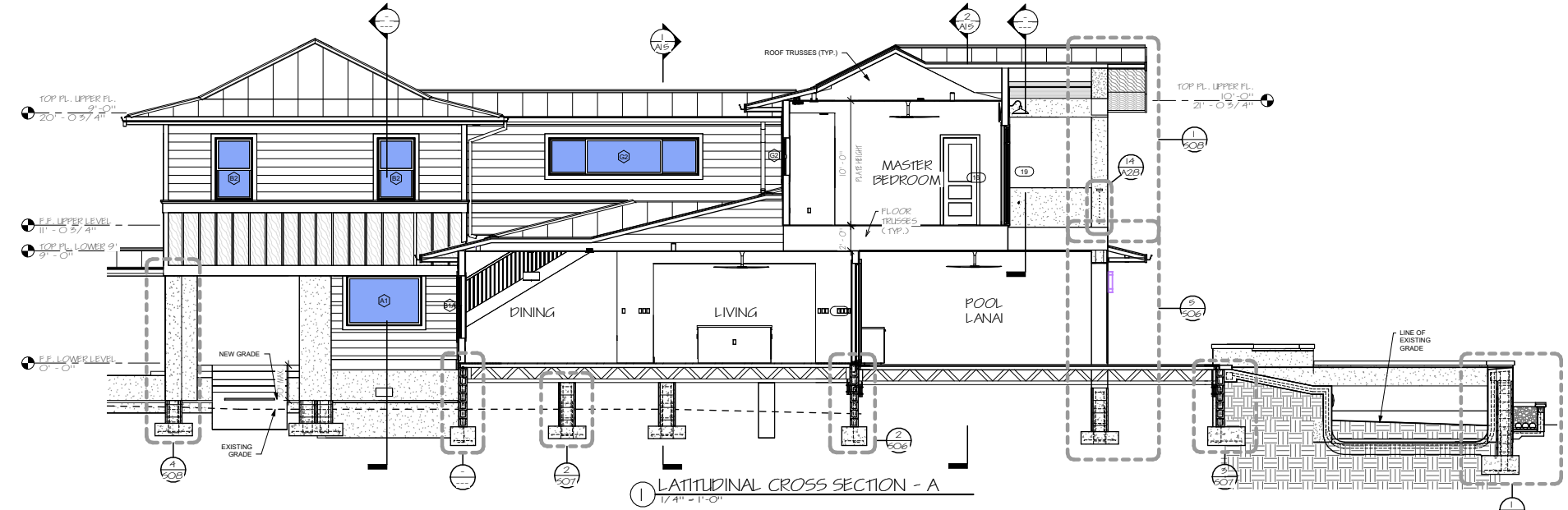


① WEST EXTERIOR ELEVATION
1/4" = 1'-0"

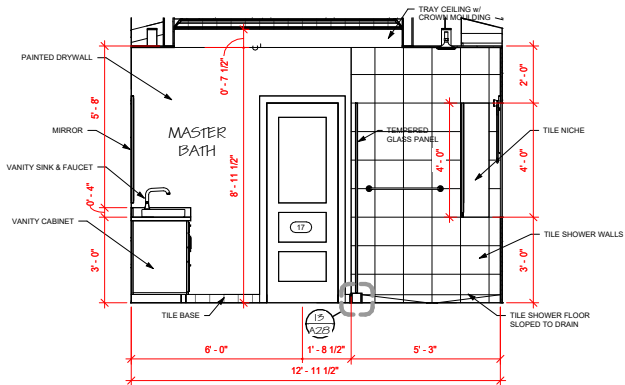


② EAST EXTERIOR ELEVATION
1/4" = 1'-0" 1/4" = 1'-0"

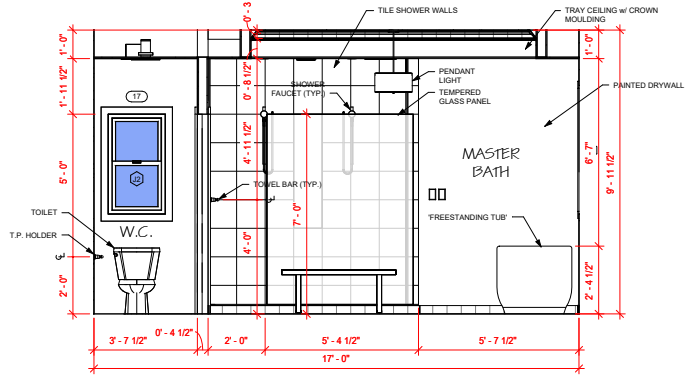
WEST & EAST EXTERIOR ELEVATIONS



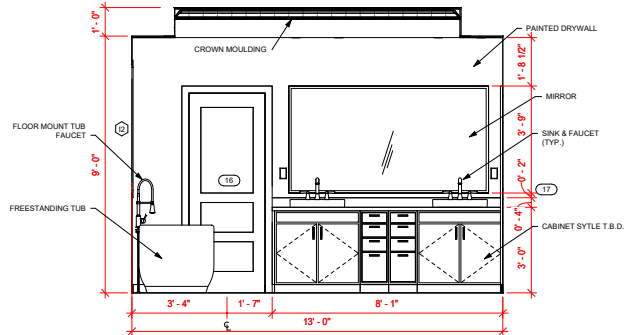
LATITUDINAL INTERIOR CROSS SECTIONS



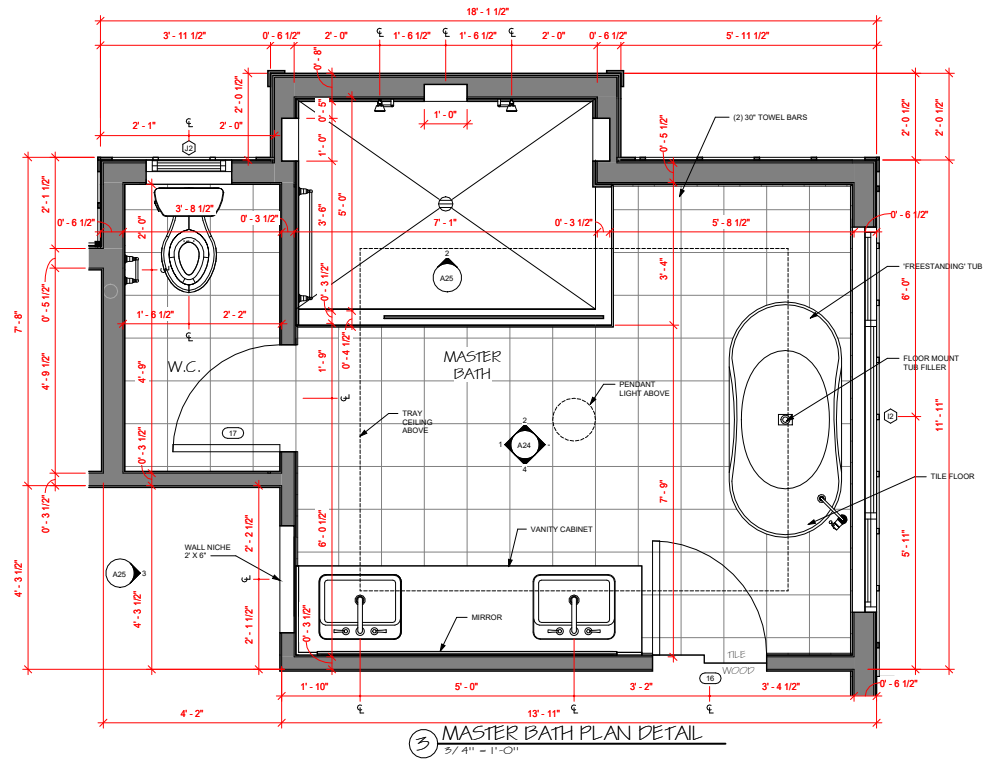
1 MASTER BATH INT. ELEVATION - B
1/2" = 1'-0"



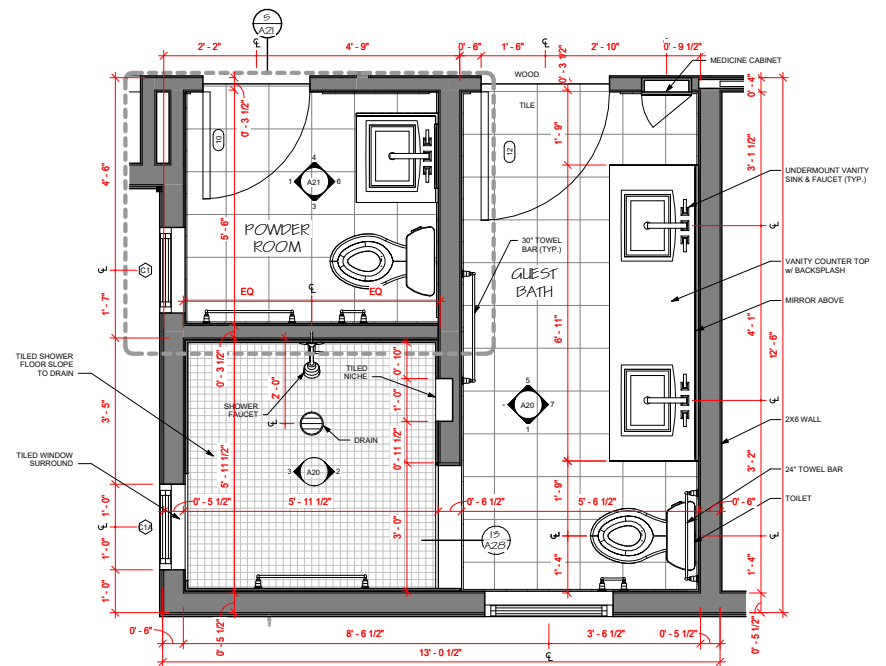
2 MASTER BATH INT. ELEVATION - C
1/2" = 1'-0"



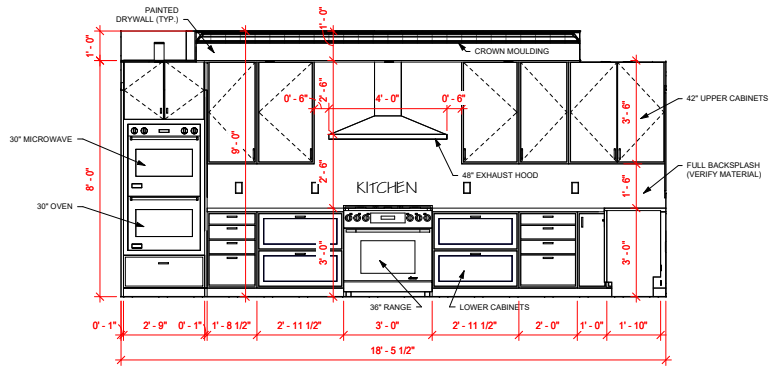
4 MASTER BATH INT. ELEVATION - A
1/2" = 1'-0"



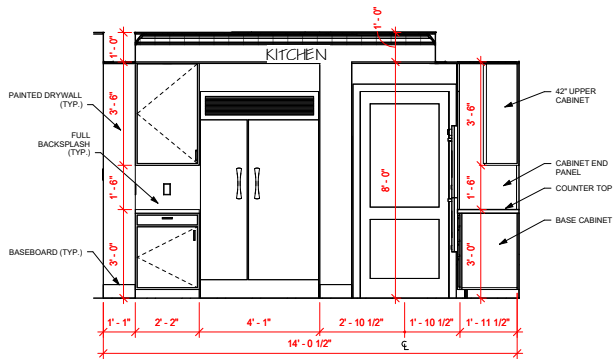
3 MASTER BATH PLAN DETAIL
3/4" = 1'-0"



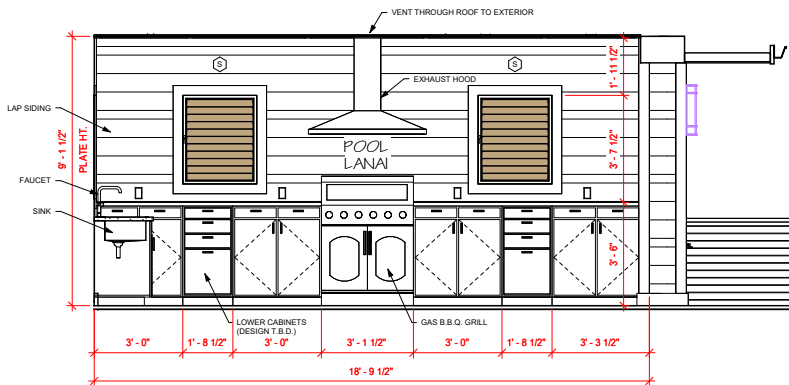
ENLARGED DETAILED BATHROOM & FLOOR PLAN ELEVATIONS



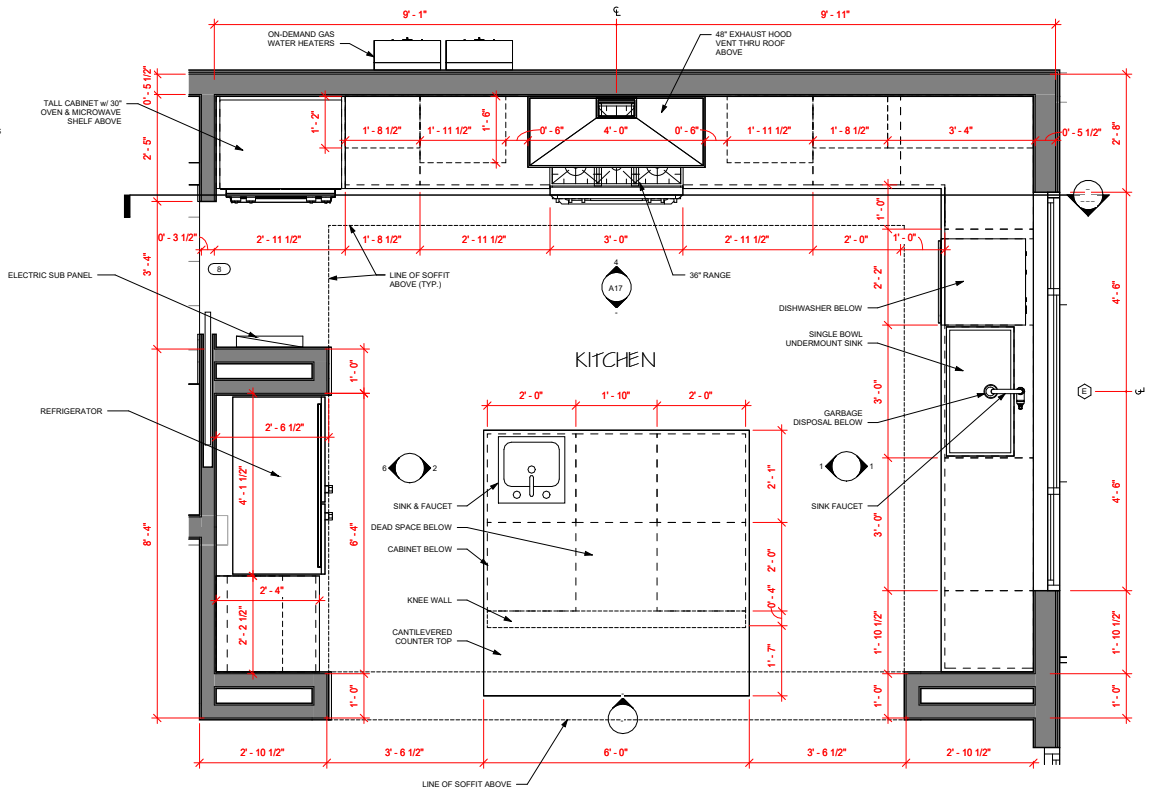
④ KITCHEN INT. ELEVATION - A
1/2" = 1'-0"



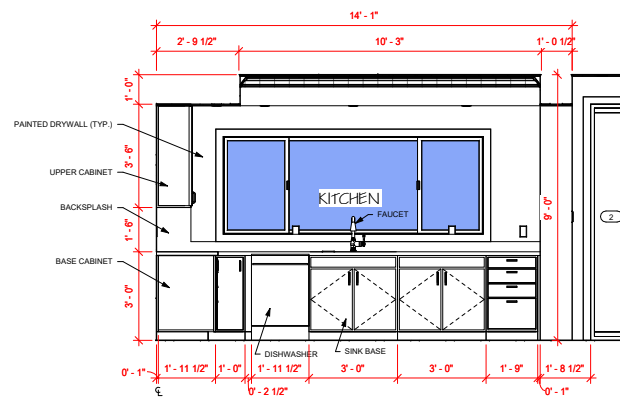
⑥ KITCHEN INT. ELEVATION - E
1/2" = 1'-0"



⑤ LANAI KITCHEN ELEVATION - A
1/2" = 1'-0"



③ KITCHEN PLAN DETAIL
3/4" = 1'-0"

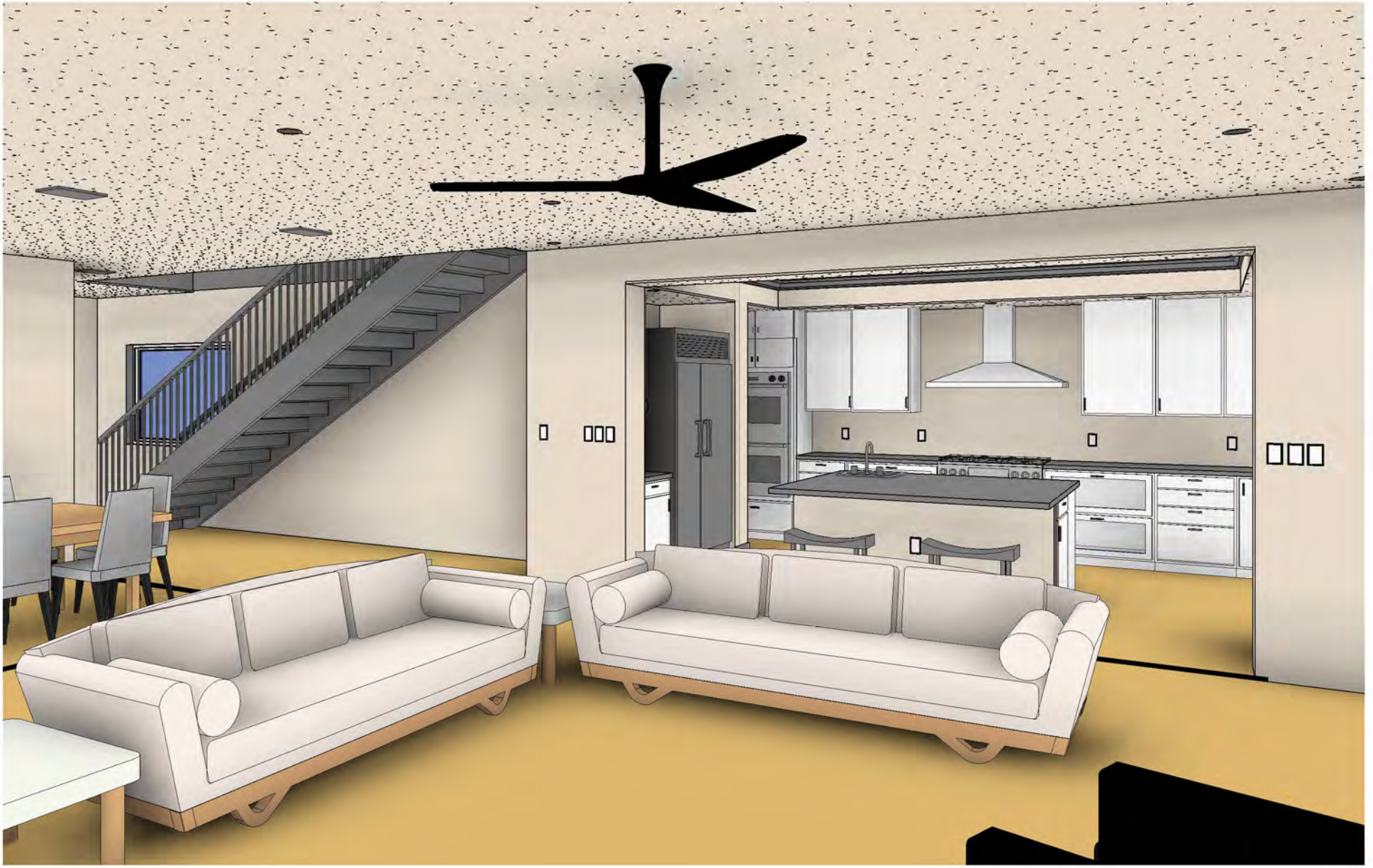


① KITCHEN INT. ELEVATION - D
1/2" = 1'-0"

DETAILED KITCHEN & FLOOR PLAN ELEVATIONS



3D KITCHEN ELEVATION-RIGHT



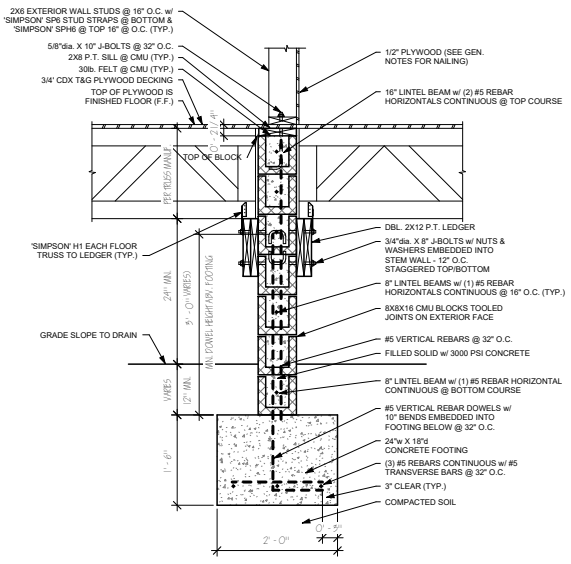
3D SITTING AREA ELEVATION

3D KITCHEN / LANAI ELEVATION

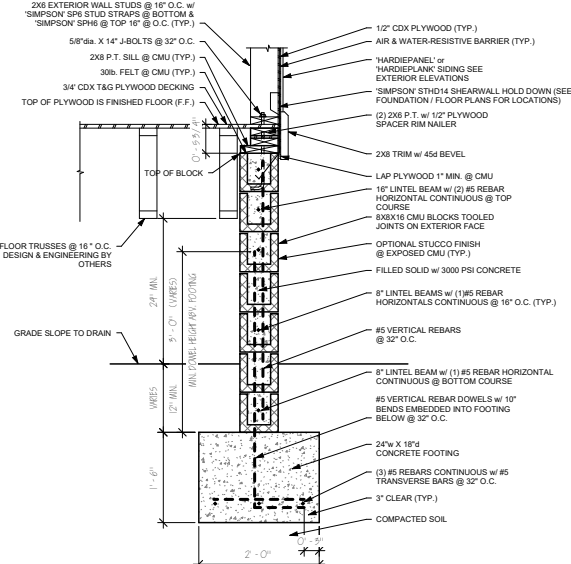




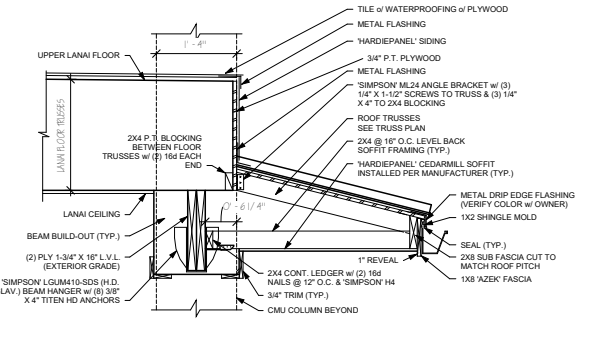
3D EXTERIOR LANAI ELEVATION



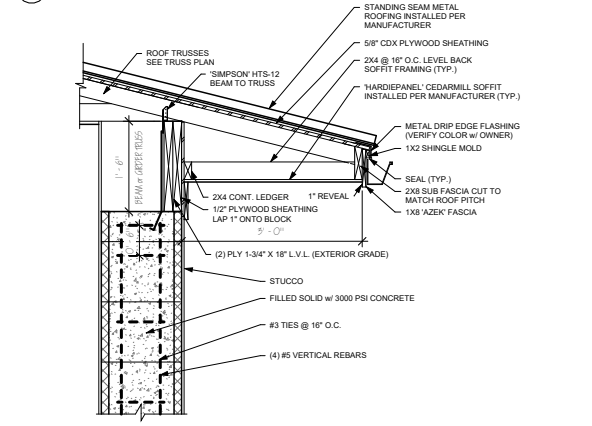
① STEM WALL 'I' - INTERIOR SHEAR WALL
1" = 1'-0"



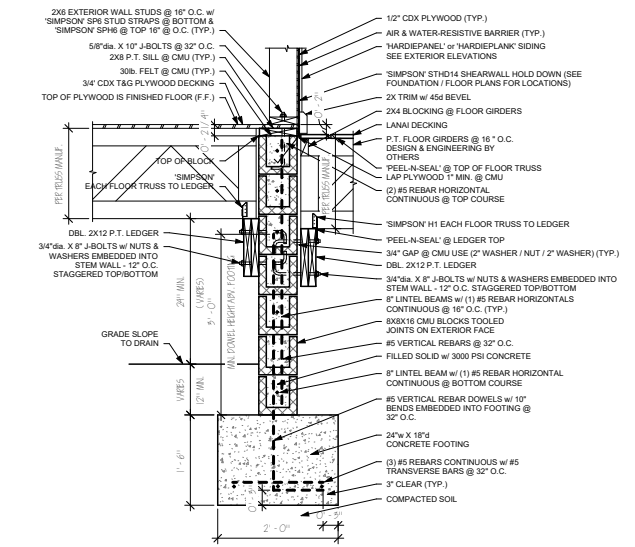
③ STEM WALL 'H' - EXT. WALL
1" = 1'-0"



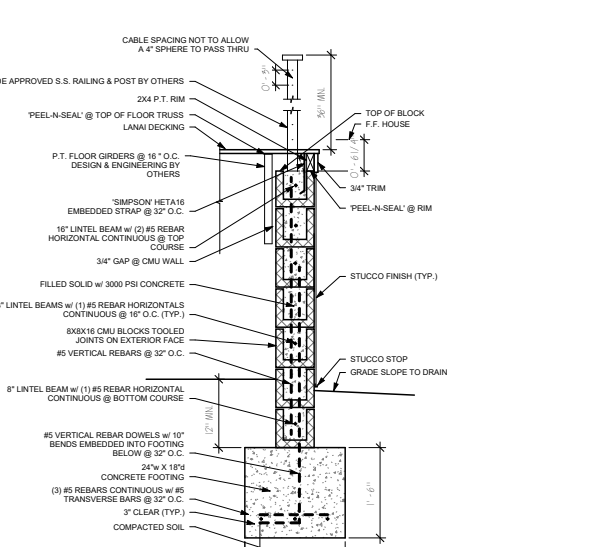
⑥ BEAM & ROOF FRAMING @ UPPER LANAI
1" = 1'-0"



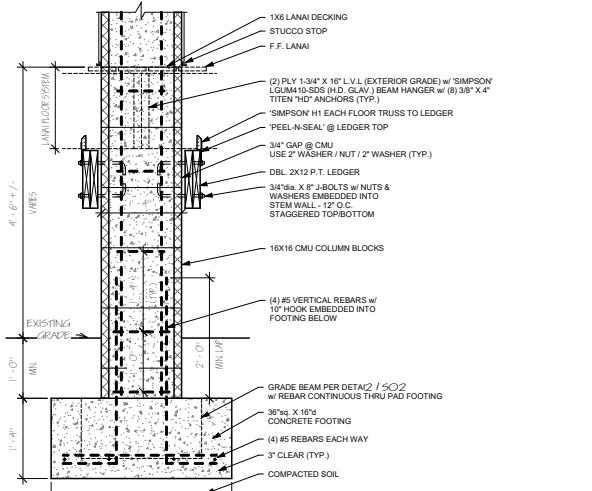
⑦ BEAM & ROOF FRAMING @ UPPER LANAI
1" = 1'-0"



② STEM WALL 'B' - LANAI @ EXT. WALLS
1" = 1'-0"

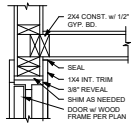


④ STEM WALL 'F' - LANAI w/ RAILING
1" = 1'-0"

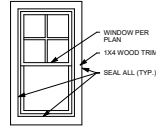


⑤ 16X16 CMU COLUMN @ LANAI
1" = 1'-0"

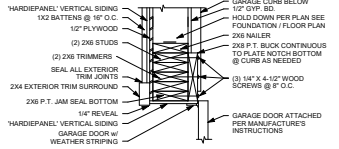
STRUCTURAL ENGINEERED CMU CONSTRUCTION DETAILS



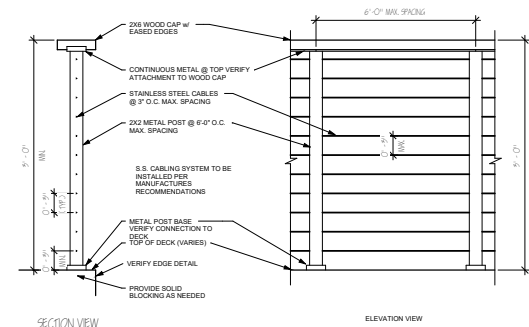
① DOOR RETURN @ WALL
1 1/2\"/>



⑥ EXTERIOR WINDOW TRIM DETAIL
1 1/2\"/>



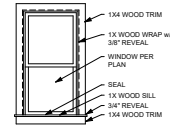
⑪ GARAGE DOOR JAMB DETAIL
1 1/2\"/>



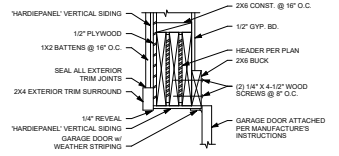
⑭ CABLE RAILING DETAIL
1 1/2\"/>



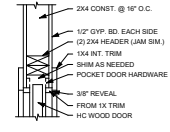
② INTERIOR DOOR HEADER
1 1/2\"/>



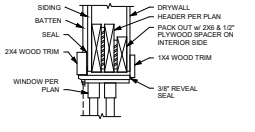
⑦ INTERIOR WINDOW TRIM DETAIL
1 1/2\"/>



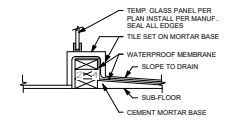
⑫ GARAGE DOOR HEADER DETAIL
1 1/2\"/>



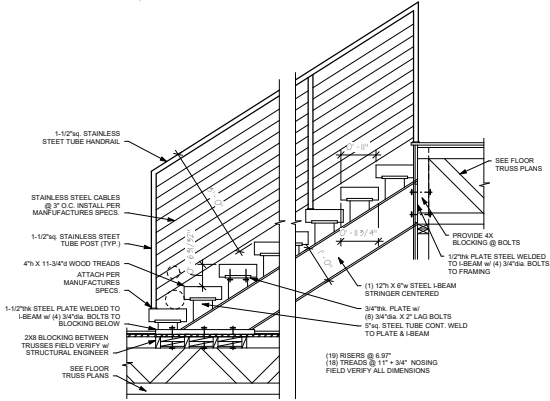
③ POCKET DOOR HEADER (JAMB SIMILAR)
1 1/2\"/>



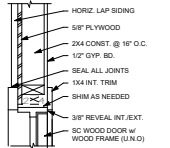
⑧ WINDOW - HEADER DETAIL
1 1/2\"/>



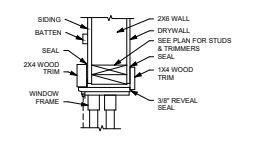
⑬ SHOWER CURB & BASE
1 1/2\"/>



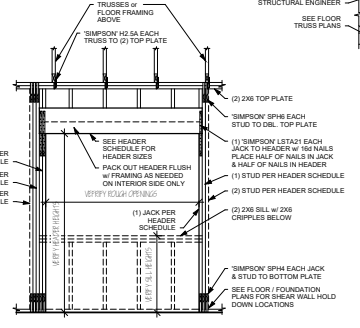
⑮ STAIR DETAIL - INTERIOR
3/4\"/>



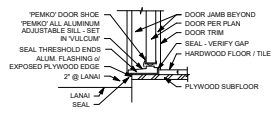
④ EXTERIOR DOOR JAMB (HEADER SIMILAR)
1 1/2\"/>



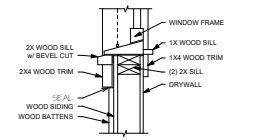
⑨ WINDOW - JAMB DETAIL
1 1/2\"/>



⑯ EXTERIOR BEARING WALL HEADER DETAIL
1 1/2\"/>

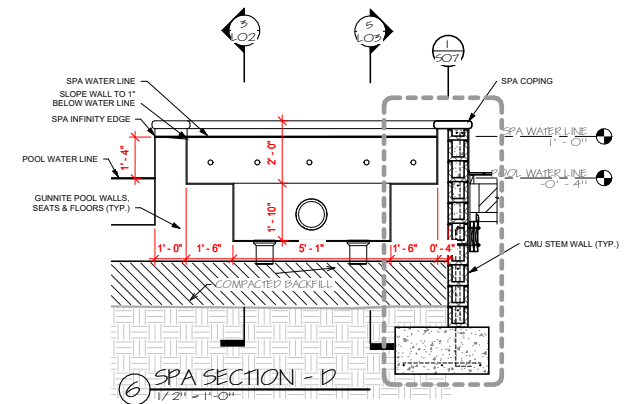
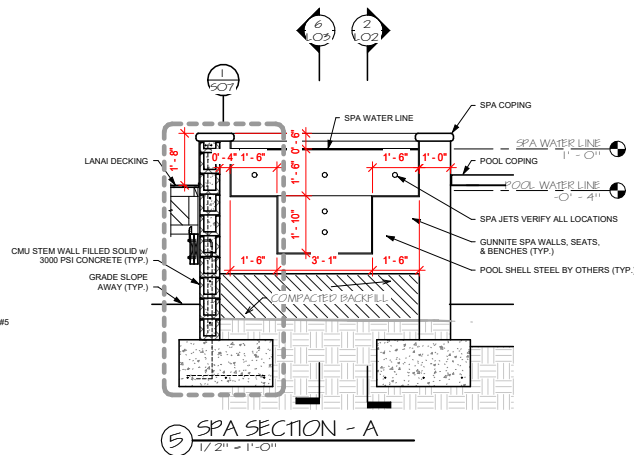
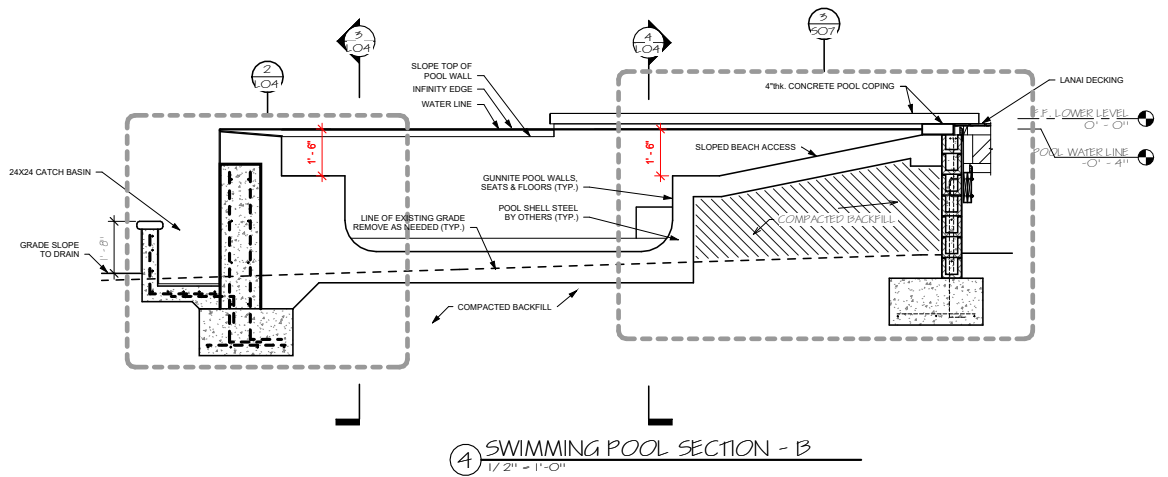
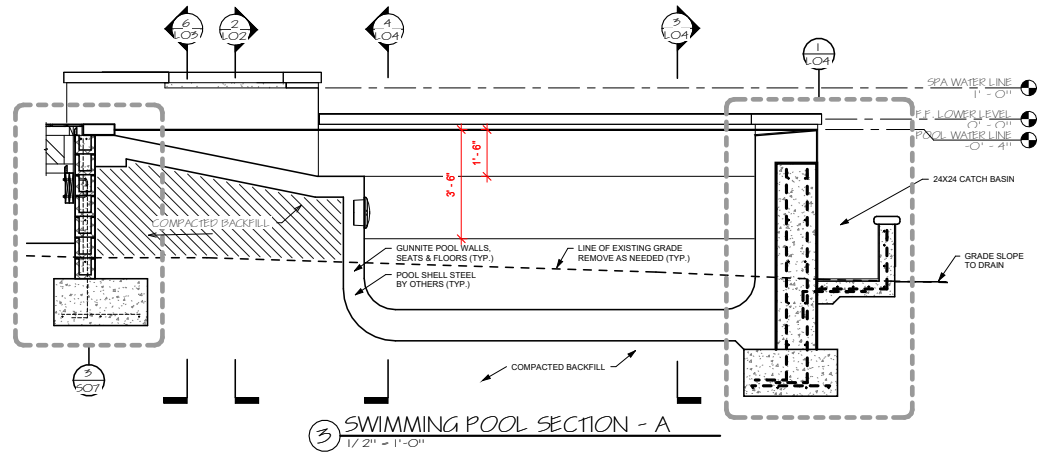
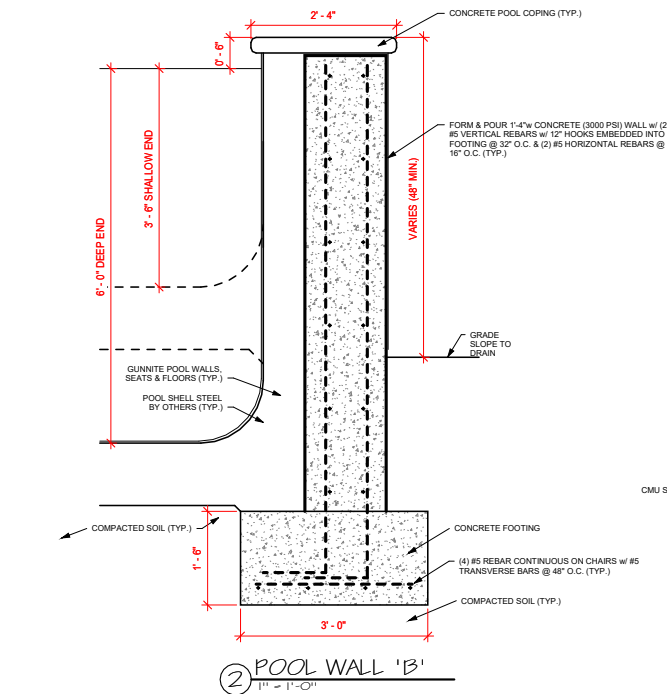
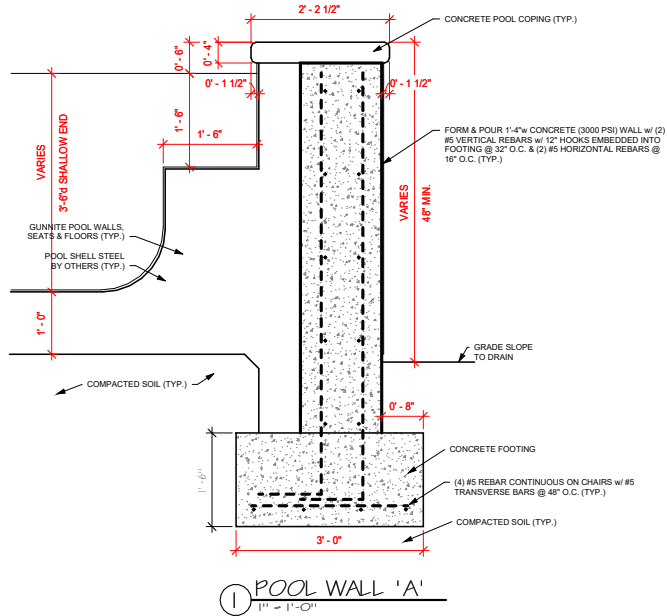


⑤ EXTERIOR DOOR THRESHOLD
1 1/2\"/>



⑩ WINDOW - SILL DETAIL
1 1/2\"/>

INTERIOR FRAMING DETAILS



STRUCTURAL ENGINEERED POOL DETAILS

PHASE #4: COMPLETED DRAWING PACKAGE

Once you approve the preliminary package, the plans will be completed, checked, and stamped by a Hawai'i State licensed architect/engineer, who will review your plans for State and County Code engineering compliance regarding loads, such as wind loads, uplifts, etc. The architect/engineer will then add any necessary structural details and engineering notes required to comply with Hawai'i State and County Codes. The plans will then be stamped for construction. One of our associates will assist you with filling out the necessary State and County forms required for your island, which you or your builder can take to the Building Department for permitting. Once approved by the Building Department, and after incorporating any additional requirements from the State/County, the project drawings will be completed and ready for use in construction.

Our typical residential architectural drawing package consists of the following:

1. Plot Plan
2. Floor Plans
3. 4 Exterior Elevations
4. 4 Enlarged Interior Elevations
5. 4 Full Building Cross Sections
6. Electrical Component Placement Plan for Electricians
7. Plumbing Component Placement Plan for Plumbers
8. 3D Drawings--Interior & Exterior
9. Building Sections & Details
10. Architect/Engineer Construction Detail & Notes
11. Miscellaneous drawings as needed

